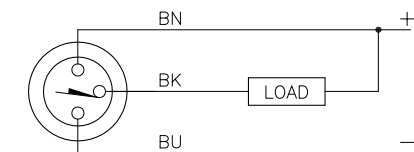


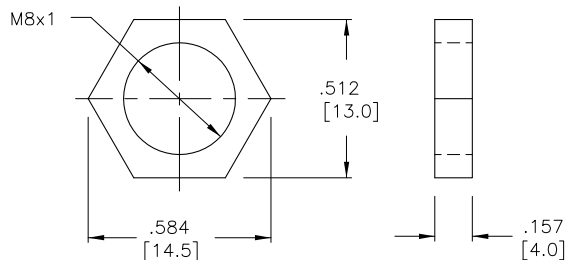
WIRING DIAGRAM



OUTPUT: AN6X

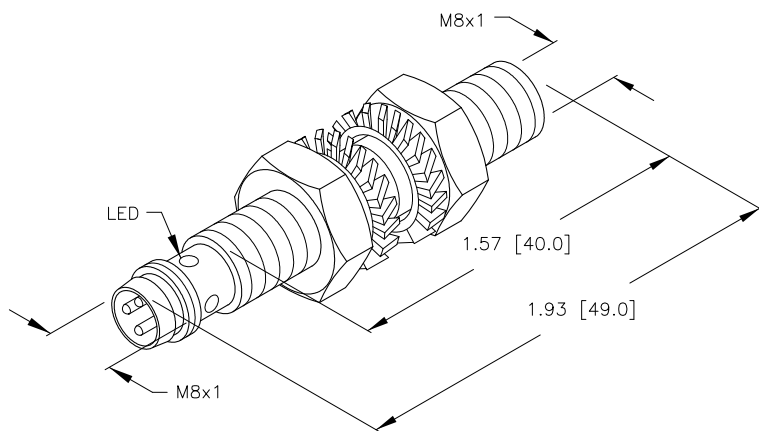
SHORT-CIRCUIT AND OVERLOAD PROTECTED

LOCKNUT LN-M8



SPECIFICATIONS

OPERATING VOLTAGE	10-30 VDC
RIPPLE	≤ 10%
DIFFERENTIAL TRAVEL (HYSTERESIS)	5% TYPICAL
VOLTAGE DROP ACROSS CONDUCTING SENSOR	≤ 1.8 V at 200 mA
OUTPUT FUNCTION	NORMALLY OPEN 3-WIRE DC SELF-CONTAINED
SHORT-CIRCUIT PROTECTED	YES
TRIGGER CURRENT FOR OVERLOAD PROTECTION	≥ 220 mA
CONTINUOUS LOAD CURRENT	≤ 200 mA
OFF-STATE (LEAKAGE) CURRENT	≤ 1.0 mA
NO LOAD CURRENT	≤ 10.0 mA
MAXIMUM APPROACH VELOCITY	≤ 1 ms
TIME DELAY BEFORE AVAILABILITY	≤ 5 ms
REVERSE POLARITY PROTECTION	INCORPORATED
WIRE-BREAK PROTECTION	INCORPORATED
POWER-ON EFFECT PROTECTION	Per IEC 947-5-2
PROTECTION AGAINST TRANSIENTS	Per EN 60947-5-2
OPERATING TEMPERATURE	-25°C to +70°C (-13°F to +158°F)
ENCLOSURE	MEETS NEMA 1,3,4,6,13 AND IEC IP 67
SHOCK	30 g, 11 ms
VIBRATION	55 Hz, 1 mm AMPLITUDE (IN ALL 3 PLANES)
LED FUNCTION	YELLOW: OUTPUT ENERGIZED
RATED OPERATING DISTANCE(S _n)	MAGNET DEPENDANT (55 mm to TURCK M2 MAGNET)
SWITCHING FREQUENCY	1000 Hz
TEMPERATURE DRIFT	≤ 0.1mm
MAGNETIC ACTUATION STRENGTH	7.5 GAUSS TYP.
REPEATABILITY	≤ 0.1mm (CONSTANT TEMP. & VOLTAGE)
EMBEDDABLE (SHIELDED)	YES



NOTE(S):

1. MATERIALS:
 STAINLESS STEEL BARREL
 STAINLESS STEEL LOCKNUTS
 STAINLESS STEEL LOCKWASHERS
 PA-66 PLASTIC SENSING FACE

RELATED DOCUMENTS		3RD ANGLE PROJECTION		THIS DRAWING IS PROPERTY OF TURCK INC. USE OF THIS DOCUMENT WITHOUT WRITTEN PERMISSION IS PROHIBITED.		 High Technology Sensors and Automation Controls 3000 CAMPUS DRIVE MINNEAPOLIS, MN 55441 1-800-544-7769 (763) 553-7300 (763) 553-0708 fax turck.com	
1.			ALL DIMENSIONS DISPLAYED ON THIS DRAWING ARE FOR REFERENCE ONLY	DRFT	RDS	DATE	04/01/04
2.				DSGN		SCALE	1=1.0
3.		MATERIAL		UNIT OF MEASUREMENT		DESCRIPTION	
4.		SEE NOTE 1		INCH [MILLIMETER]		BIM-EG08-AN6X-V1131	
FINISH		CONTACT TURCK FOR MORE INFORMATION		IDENTIFICATION NO.		REV	
				S4621303		A	
A		DRAWING RELEASE		DO NOT SCALE THIS DRAWING		FILE: S4621303	
REV	DESCRIPTION	BY	DATE	ECO NO.	SHEET 1 OF 1		