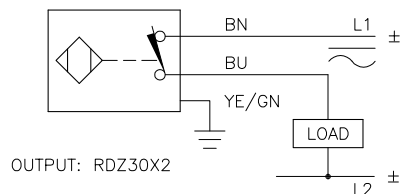
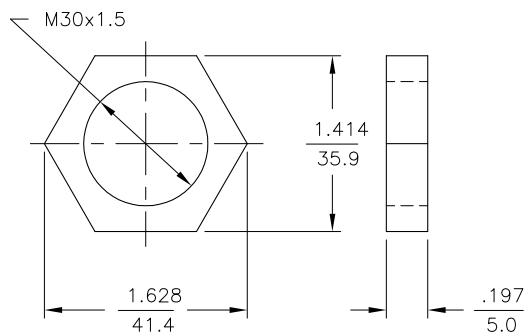


WIRING DIAGRAM



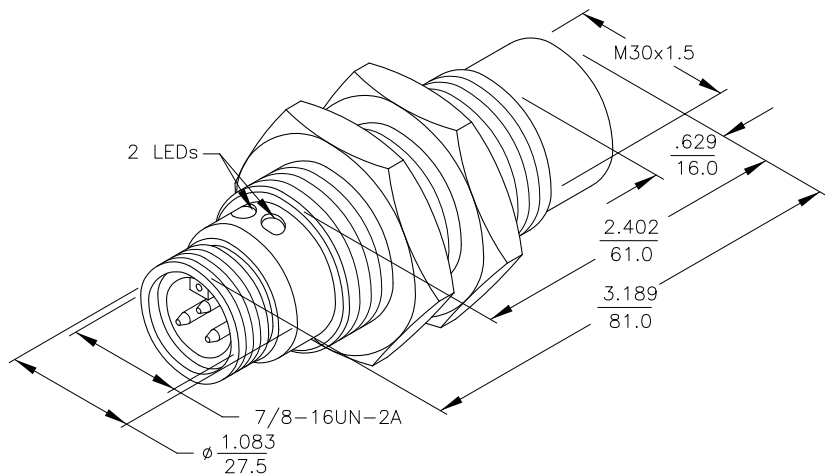
SHORT-CIRCUIT AND OVERLOAD PROTECTED

LOCKNUT LN-M30



SPECIFICATIONS

OPERATING VOLTAGE	20-250 VAC / 10-300 VDC
LINE FREQUENCY	40-60 Hz
HYSTERESIS (DIFFERENTIAL TRAVEL)	3-15% (5% TYPICAL)
VOLTAGE DROP ACROSS CONDUCTING SENSOR	≤ 6.0 V at FULL RATED CURRENT
OUTPUT FUNCTION	NORMALLY OPEN 2-WIRE AC/DC
SHORT-CIRCUIT PROTECTED	YES
TRIGGER CURRENT FOR OVERLOAD PROTECTION	≥ 440 mA AC/≥ 330 mA (DC)
CONTINUOUS LOAD CURRENT	≤ 400 mA AC/≤ 300 mA DC
LEAKAGE (OFF-STATE) CURRENT	≤ 1.7 mA
MINIMUM LOAD CURRENT	≥ 3.0 mA
INRUSH CURRENT	≤ 4.0 A (≤ 20 ms, 10% DUTY CYCLE)
TIME DELAY BEFORE AVAILABILITY	≤ 15 ms
POWER-ON EFFECT	PER IEC 947-5-2
PROTECTION AGAINST TRANSIENTS	PER EN 60947-5-2
OPERATING TEMPERATURE	-25°C to +70°C (-13°F to +158°F)
ENCLOSURE	MEETS NEMA 1, 3, 4, 6, 13 AND IEC IP67
SHOCK	30 g, 11 ms
VIBRATION	55 Hz, 1 mm AMPLITUDE (IN ALL 3 PLANES)
LED FUNCTION	GREEN = POWER ON FLASHING GREEN = SHORT-CIRCUIT WARNING RED = OUTPUT ENERGIZED
SENSING RANGE	20 mm = .787" (NOMINAL)
SWITCHING FREQUENCY	60 Hz
REPEATABILITY	≤ 2% OF RATED OPERATING DISTANCE
EMBEDDABLE (SHIELDED)	NO
LOCKNUT M30x1.5	36 mm AF, 41.5 mm AC, 5 mm THK



NOTE:

- MATERIALS:
BARREL - CHROME PLATED BRASS
LOCKNUTS - CHROME PLATED BRASS
SENSING FACE - PA12-G30 PLASTIC
END CAP - TPE-O ELASTOMER
- ALL DIMENSIONAL TOLERANCES %±1.0mm.

RELATED DOCUMENTS		3RD ANGLE PROJECTION		THIS DRAWING IS PROPERTY OF TURCK INC. USE OF THIS DOCUMENT WITHOUT WRITTEN PERMISSION IS PROHIBITED.		 High Technology Sensors and Automation Controls		3000 CAMPUS DRIVE MINNEAPOLIS, MN 55441 1-800-544-7769 (763) 553-7300 (763) 553-0708 fax turck.com	
1. 2. 3. 4.				DRFT	RDS	DATE	08/25/03	DESCRIPTION	
MATERIAL		SEE NOTE		DGSN	BT	SCALE	NONE	NI20-G30-RDZ30X-B1131	
FINISH		SEE NOTE		UNIT OF MEASUREMENT			IDENTIFICATION NO.		REV
				INCH [MILLIMETER]			T4205481		A
A		DRAWING RELEASE		RDS		08/25/03		DO NOT SCALE THIS DRAWING	
REV		DESCRIPTION		BY		DATE		ECO NO.	
								FILE: T4205481	
								SHEET 1 OF 1	