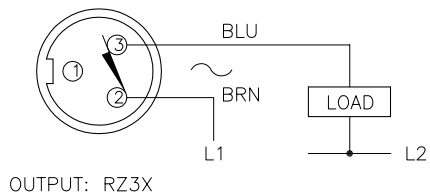
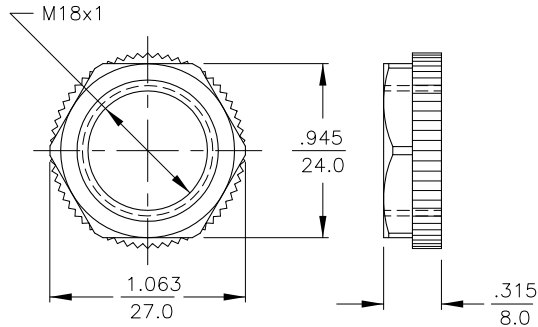


WIRING DIAGRAM



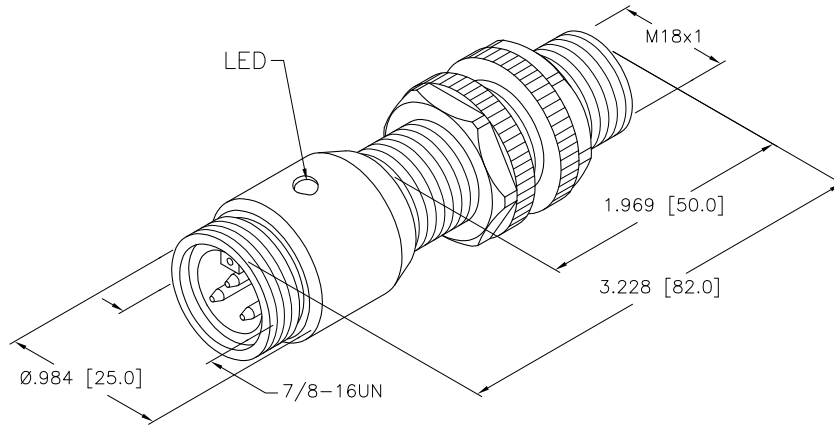
WARNING: NO SHORT-CIRCUIT PROTECTION
ALWAYS WIRE A LOAD IN SERIES WITH THE SENSOR.

LOCKNUT LN-P18



SPECIFICATIONS

| | |
|-----------------------------------|---|
| RATED OPERATING DISTANCE | 5.0 mm = .197" (NOMINAL) |
| MOUNTING MODE | FLUSH |
| TEMPERATURE DRIFT | ≤ ±10% |
| HYSTERESIS (SWITCHING DISTANCE) | 3-15% |
| REPEATABILITY | ≤ 2% |
| OPERATING TEMPERATURE | -25°C to +70°C (-13°F to +158°F) |
| RATED OPERATIONAL VOLTAGE (AC/DC) | 20-250 VAC/10-300 VDC |
| RATED OPERATIONAL CURRENT (AC/DC) | ≤ 400 mA/ ≤ 300 MA |
| LINE FREQUENCY | 50-60 Hz |
| MAX. OFF-STATE CURRENT | ≤ 1.7 mA |
| RATED INSULATION VOLTAGE | ≤ 1.5 kV |
| SURGE CURRENT | ≤ 8 A (≤ 10 ms MAX. 5 Hz) |
| MAX. VOLTAGE DROP | ≤ 6 V |
| OUTPUT FUNCTION | 2-WIRE, NORMALLY CLOSED |
| MINIMUM OPERATIONAL CURRENT | ≥ 3 mA |
| PROTECTION CLASS | 2 |
| MAX. SWITCHING FREQUENCY | ≤ 0.02 kHz |
| HOUSING MATERIAL | PLASTIC, POM |
| ACTIVE FACE | PLASTIC, PA12-GF20 |
| SHOCK | 30 g, 11 ms |
| VIBRATION | 55 Hz, 1 mm AMPLITUDE (IN ALL 3 PLANES) |
| DEGREE OF PROTECTION | IP68 |



SOURCE DRAWING - FOR REFERENCE ONLY

| | | | | | | | |
|---------------------------|-----------------|---|---------|---|----------------|---|--------------|
| RELATED DOCUMENTS | | 3RD ANGLE PROJECTION | | THIS DRAWING IS PROPERTY OF TURCK INC. USE OF THIS DOCUMENT WITHOUT WRITTEN PERMISSION IS PROHIBITED. | | 3000 CAMPUS DRIVE MINNEAPOLIS, MN 55441 1-800-544-7769 (763) 553-7300 (763) 553-0708 fax turck.com | |
| 1. 2. 3. 4. | | | | DRFT SMW DATE 8/5/87 DSGN SCALE 1=1.5 | | DESCRIPTION BI 5-P18-RZ3X-B2331 | |
| MATERIAL SEE SPECS | | ALL DIMENSIONS DISPLAYED ON THIS DRAWING ARE FOR REFERENCE ONLY | | UNIT OF MEASUREMENT INCH [MILLIMETER] | | IDENTIFICATION NO. T4375000 | |
| FINISH | | CONTACT TURCK FOR MORE INFORMATION | | DO NOT SCALE THIS DRAWING | | REV A | |
| A | DRAWING RELEASE | SMW | 8/05/87 | | | | |
| REV | DESCRIPTION | BY | DATE | ECO NO. | FILE: T4375000 | | SHEET 1 OF 1 |

| | | | | |
|-----|-----------------|-----|---------|---------|
| A | DRAWING RELEASE | SMW | 8/05/87 | |
| REV | DESCRIPTION | BY | DATE | ECO NO. |