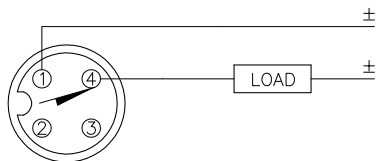


WIRING DIAGRAM

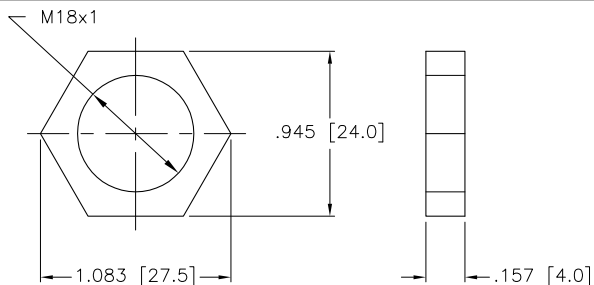
LOCKNUT LN-MT18

SPECIFICATIONS

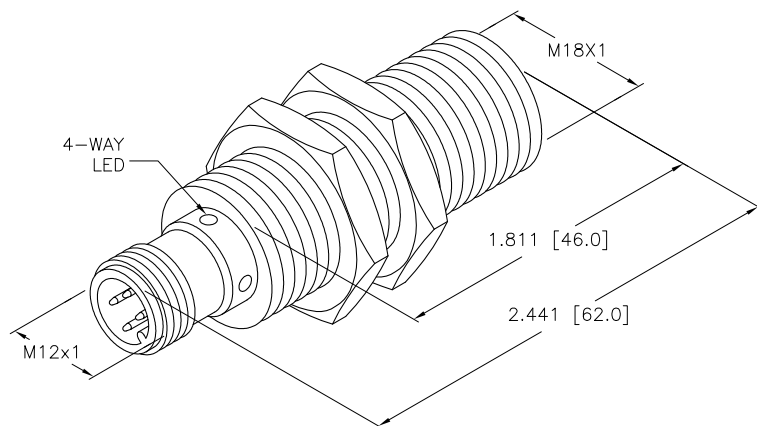


OUTPUT: AD4X

SHORT-CIRCUIT AND OVERLOAD PROTECTED



OPERATING VOLTAGE	10-65 VDC
RIPPLE	≤10%
DIFFERENTIAL TRAVEL (HYSTERESIS)	1-15% (5% TYPICAL)
VOLTAGE DROP ACROSS CONDUCTING SENSOR	≤5 V at 100 mA
OUTPUT FUNCTION	NORMALLY OPEN 2-WIRE DC
TTL COMPATIBLE	NO
SHORT-CIRCUIT PROTECTED	YES
TRIGGER CURRENT FOR OVERLOAD PROTECTION	≥120 mA
CONTINUOUS LOAD CURRENT	≤100 mA
RESIDUAL CURRENT	≤0.8 mA
TIME DELAY BEFORE AVAILABILITY	≤3 ms
POWER-ON EFFECT	PER IEC 947-5-2
REVERSE POLARITY PROTECTION	INCORPORATED
PROTECTION AGAINST TRANSIENTS	Per EN 60947-5-2
OPERATING TEMPERATURE	-25°C to +70°C (-13°F to +158°F)
ENCLOSURE	MEETS NEMA 1, 3, 4, 6, 13 AND IEC IP67
SHOCK	30 g, 11 ms
VIBRATION	55 Hz, 1 mm AMPLITUDE (IN ALL 3 PLANES)
LED FUNCTION	YELLOW: OUTPUT ENERGIZED
RATED OPERATING DISTANCE	7 mm = .276" (NOMINAL)
SWITCHING FREQUENCY	1000 Hz
REPEATABILITY	≤2% of RATED OPERATING DISTANCE
EMBEDDABLE (SHIELDED)	YES
MATING PLUGS/CABLES	4-PIN "EUROFAST" CONSTRUCTION



NOTES:

- MATERIALS:
 TEFLON-COATED BRASS BARREL
 TEFLON-COATED BRASS CONNECTOR
 TEFLON-COATED BRASS LOCKNUTS
 BLACK CHROMATED STEEL LOCKWASHERS
 STONEFACE FRONT CAP

2. ALL DIMENSIONAL TOLERANCES: ±1.0mm.

3. "/S1589" DESIGNATES WELDGUARD THERMOSET PLASTIC LAMINATE FRONT FACE.

SOURCE DRAWING - FOR REFERENCE ONLY

RELATED DOCUMENTS		3RD ANGLE PROJECTION		THIS DRAWING IS PROPERTY OF TURCK INC. USE OF THIS DOCUMENT WITHOUT WRITTEN PERMISSION IS PROHIBITED.		3000 CAMPUS DRIVE MINNEAPOLIS, MN 55441 1-800-544-7769 (763) 553-7300 (763) 553-0708 fax turck.com			
1.			ALL DIMENSIONS DISPLAYED ON THIS DRAWING ARE FOR REFERENCE ONLY	DRFT	RDS	DATE	05/28/08		
2.				DSGN		SCALE	1=1.0	DESCRIPTION	BI 7-MT18-AD4X-H1144/S1589
3.				UNIT OF MEASUREMENT			IDENTIFICATION NO.	REV	
4.				INCH [MILLIMETER]			T4414576	B	
MATERIAL		FINISH		CONTACT TURCK FOR MORE INFORMATION		DO NOT SCALE THIS DRAWING		FILE: T4414576	SHEET 1 OF 1

B	UPDATE DESCRIPTION, SEE ECO	RDS	01/31/11	34139
REV	DESCRIPTION	BY	DATE	ECO NO.