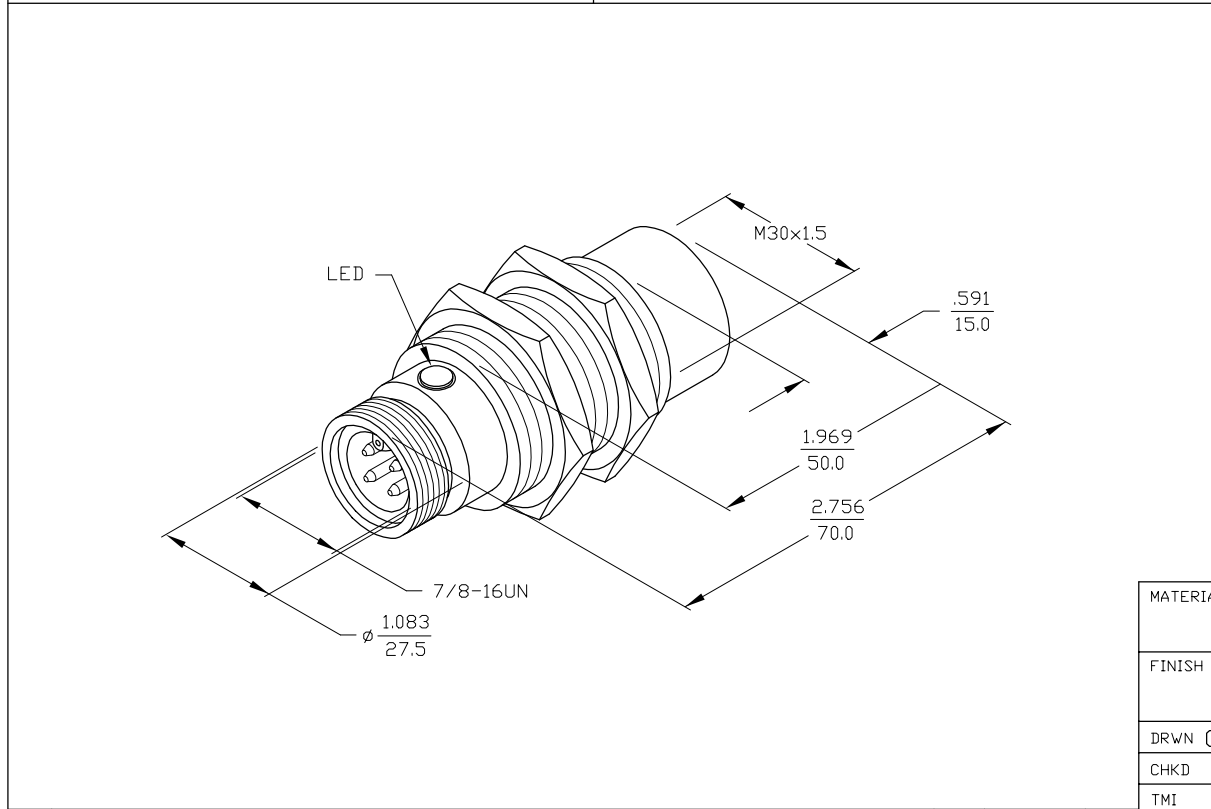


SPECIFICATIONS

|   |   |
|---|---|
| OPERATING VOLTAGE                       | 10-30 VDC                                 |
| RIPPLE                                  | ≤10%                                      |
| HYSTERESIS (DIFFERENTIAL TRAVEL)        | 3-15% (5% TYPICAL)                        |
| VOLTAGE DROP ACROSS CONDUCTING SENSOR   | ≤1.8 V at 200 mA                          |
| OUTPUT FUNCTION                         | NORMALLY OPEN<br>3-WIRE DC SELF-CONTAINED |
| TTL COMPATIBLE                          | NO  |
| SHORT-CIRCUIT PROTECTED                 | YES                                       |
| TRIGGER CURRENT FOR OVERLOAD PROTECTION | ≥220 mA                                   |
| CONTINUOUS LOAD CURRENT                 | ≤200 mA                                   |
| LEAKAGE (OFF-STATE) CURRENT             | <10 μA                                    |
| NO-LOAD CURRENT                         | 5.5-9.5 mA                                |
| TIME DELAY BEFORE AVAILABILITY          | ≤8 ms                                     |
| POWER-ON EFFECT PROTECTION              | INCORPORATED                              |
| POLARITY INVERSION PROTECTION           | INCORPORATED                              |
| WIRE BREAK PROTECTION                   | INCORPORATED                              |
| PROTECTION AGAINST TRANSIENTS           | 2 kV, 1 ms, 1 kΩ                          |
| OPERATING TEMPERATURE                   | -25°C to +70°C (-13°F to +158°F)          |
| ENCLOSURE                               | MEETS NEMA 1, 3, 4, 6, 13 AND IEC IP67    |
| SHOCK                                   | 30 g, 11 ms                               |
| VIBRATION                               | 55 Hz, 1 mm AMPLITUDE (IN ALL 3 PLANES)   |
| LED FUNCTION                            | RED: OUTPUT ENERGIZED                     |
| SENSING RANGE                           | 15 mm = .591" (NOMINAL)                   |
| SWITCHING FREQUENCY                     | 500 Hz                                    |
| REPEATABILITY                           | ≤2% of NOMINAL SENSING RANGE              |
| SHIELDED                                | NO  |
| MATING PLUGS/CABLES                     | 4-PIN "MINIFAST" CONSTRUCTION             |



|  |                              |   |
|--|------------------------------|---|
| MATERIAL<br>BRASS BARREL                   | 3RD ANGLE PROJECTION<br>     | <b>TURCK INC</b><br>3000 CAMPUS DRIVE<br>MINNEAPOLIS, MN 55441<br>PHONE: (612) 553-9224 |
| FINISH<br>COPPER/NICKEL/<br>CHROME PLATING |                              |   |
| DRWN GMB DATE 5/19/88                      | PART NO. Ni15-G30-AN6X-B1141 |   |
| CHKD DATE                                  | SIZE B                       | ID NO. 4695500  |
| TMI  | SCALE NONE                   |   |
| DIMENSIONS ARE IN INCHES<br>mm             |                              | BMQD-D\4695500 SHEET OF   |

|           |                                |      |         |      |
|-----------|--------------------------------|------|---------|------|
| A         | SEE REVISION DOCUMENT NG30B114 | GMB  | 3/21/90 |      |
| REV       | DESCRIPTION                    | DRFT | DATE    | CHKD |
| REVISIONS |                                |      |         |      |