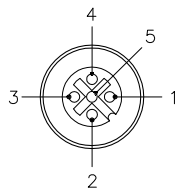
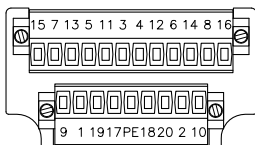


FEMALE END VIEW

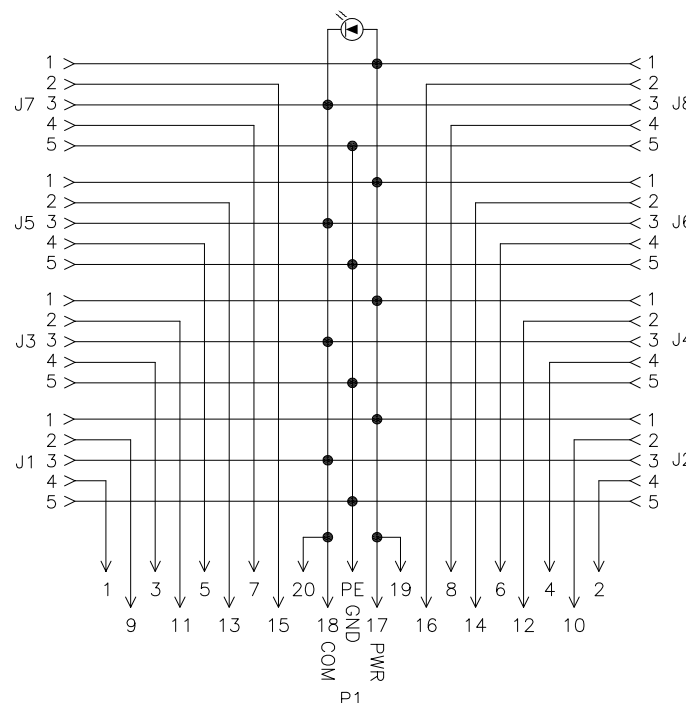
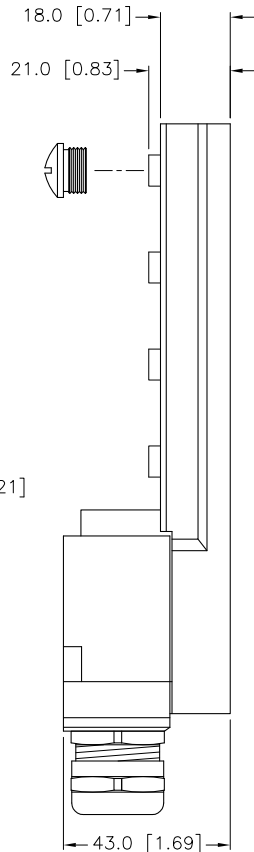
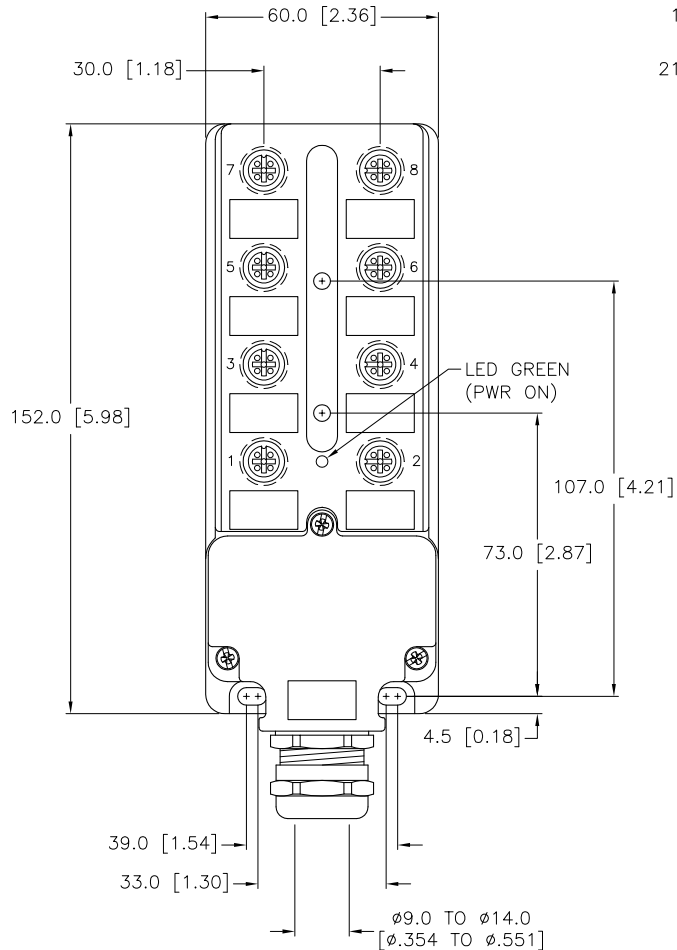


TERMINAL END VIEW



SPECIFICATIONS

HOUSING MATERIAL	DIE-CAST ZINC
HOUSING FINISH/COLOR	NICKEL-PLATED/SILVER
RECEPTACLE THREADING	BRASS/NICKEL
CONTACT CARRIERS/COLOR	PBT/BLACK
CONTACT MATERIAL/PLATING	BRASS/GOLD
SEALING, RECEPTACLE	VITON O-RING
SEALING, HOUSING	TPU FOAM
TERMINATION METHOD	THREAD-CLAMPING (FIELD WIRABLE)
MAXIMUM WIRE SIZE [AWG]	16 AWG
OPERATING VOLTAGE [V]	10-30 V
OPERATING CURRENT [A]	3.0 A PER PORT, 10.0 A TOTAL
PROTECTION CLASS to DIN 40050	IP 68 - ONLY WHEN ALL RECEPTACLES ARE COVERED WITH PLUGS OR CONNECTED
OPERATING TEMPERATURE	-20°C to +90°C (-4°F to +194°F)



WIRING DIAGRAM

SOURCE DRAWING - FOR REFERENCE ONLY

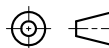


CLOSURE CAPS (2 INCLUDED)

RELATED DOCUMENTS

- 1.
- 2.
- 3.
- 4.

3RD ANGLE PROJECTION



THIS DRAWING IS PROPERTY OF TURCK INC. USE OF THIS DOCUMENT WITHOUT WRITTEN PERMISSION IS PROHIBITED.

TURCK INC
High Technology Sensors and Automation Controls

3000 CAMPUS DRIVE
MINNEAPOLIS, MN 55441
1-800-544-7769
(763) 553-7300
(763) 553-0708 fax
turck.com

MATERIAL

SEE SPECIFICATIONS

FINISH

SEE SPECIFICATIONS

ALL DIMENSIONS DISPLAYED ON THIS DRAWING ARE FOR REFERENCE ONLY

CONTACT TURCK FOR MORE INFORMATION

DRFT JBJ

DSGN

UNIT OF MEASUREMENT

MILLIMETER [INCH]

DO NOT SCALE THIS DRAWING

DATE 10/10/01

SCALE 1=2.0

DESCRIPTION

8MB12-5P1-MS-SK

IDENTIFICATION NO.

U8018200

REV

C

C	DRAWING PROCESSED AS PART OF ECO 33971	CBM	04/07/11	33971
REV	DESCRIPTION	BY	DATE	ECO NO.